



World Class Clampseal® Swivldisc Gate Valves

- *Swivldisc Wedge Gate*
- *Pressure Seat Bonnet*
- *In-line Repairable*
- *High-performance Graphite Packing*



Conval Clampseal® Swivldisc Gate Valves are designed for the world's most demanding high-pressure, high-temperature applications.



STANDARD SIZES

1/2" through 4"

PRESSURE RATING

ASME Class 1500 and 2500

STANDARD MATERIALS

Carbon Steel 216 GR WCB

Other materials available upon request

STANDARD ACCESSORIES

Bypass

Actuators - Air or Motor



DESIGN FEATURES

Swivldisc Wedge Gate Design

The Conval Swivldisc wedge gate design employs a flexible disc which permits the seating surfaces to achieve perfect alignment, establishing a tight seal not possible with standard wedge gates.

Pressure Seal Bonnet

The simple and effective pressure seal bonnet provides ready access for servicing with no welds to cut or seal rings or gaskets to replace. The body-to-bonnet joint integrity is maintained through countless thermal cycles.

High-performance Graphite Packing

The packing system delivers the best performance available. The one-piece gland with integral gland wrench is readily adjustable at any time. The fine finish of the stem and chamber combines with high-performance graphite packing to ensure long packing service life.

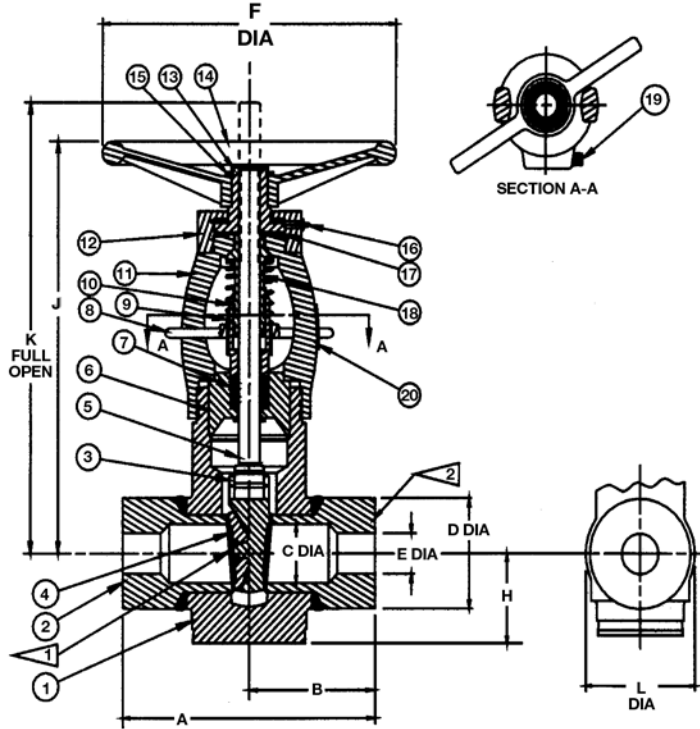
In-line Servicing

With the Conval Swivldisc gate valve, repacking can be accomplished by swapping the bonnet-chamber with the fresh pre-packed unit.

Two-Year Warranty

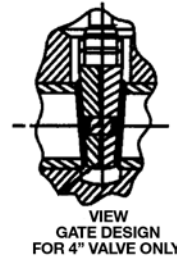
Conval is committed to unsurpassed quality. We are so confident of the quality of our product, that we offer a two-year warranty.

SPECIFICATIONS



MATERIALS

No.	Name	Qty.	Material	Specification
1	Body	1	Carbon Steel	ASME SA-216 GR WCB
2	Hub	2	Carbon Steel	ASME SA-696 GR. C
3	Gate	1	Stainless Steel Cobalt Alloy	ASME SA-479 TYPE 410
4	Disc	1	Cobalt Alloy	
5	Stem	1	Stainless Steel	ASTM A582-TYPE 416
6	Bonnet	1	Stainless Steel	ASME SA-479 TYPE 410
7	Packing	SET	Graphite Rings	HIGH DENSITY GRAPHITE
8	IGW	1	Cast Stainless	Stainless Steel
9	Spring	1	Stainless Steel	Mfg. Std.
10	Gland	1	Stainless Steel	ASTM A582-TYPE416
11	Yoke	1	Carbon Steel	ASME SA-216 GR WCB/SA-105
12	Bearing Cap	1	Carbon Steel	Mfg. Std.
13	Stem Nut	1	Aluminum Bronze	ASME SB-150 UNS C64200
14	Handwheel	1	Iron/Steel	Mfg. Std.
15	Retaining Ring	1	Stainless Steel	Mfg. Std.
16	Grease Fitting	1	Stainless Steel	Mfg. Std.
17	Bearing Set	2	Commercial	Mfg. Std.
18	Yoke Bushing	1	Aluminum Bronze	ASME SB-150 UNS C64200
19	Clampbolt	1	Stainless Steel	Mfg. Std.
20	ID Plate	1	Stainless Steel	Mfg. Std.



NOTES:
1 SEAT FACING ON HUBS
TO BE COBALT ALLOY
2 ENDS AS REQUIRED

Pressure Class	Size Code	Pipe Size	Valve Outline Dimensions											Flow Cv
			A	B	C	D	E	F	H	J	K	L		
1500	2E	1/2	5 1/2	2 3/4	0.815	2 1/16	0.466	6	1 3/4	9	9 1/4	2 7/8	15	
		15	140	70	21	52	12	152	45	229	235	73		
	2E	3/4	5 1/2	2 3/4	0.815	2 1/16	0.612	6	1 3/4	9	9 1/4	2 7/8	25	
		20	140	70	21	52	16	152	45	229	235	73		
	2E	1	5 1/2	2 3/4	0.815	2 1/16	0.815	6	1 3/4	9	9 1/4	2 7/8	45	
		25	140	70	21	52	21	152	45	229	235	73		
	3G	1 1/2	7	3 1/2	1.338	3	1.338	8	2 1/8	12 7/8	13 5/8	3 1/2	131	
		40	178	95	34	80	34	203	54	327	346	95		
4J	2	8 1/2	4 1/4	1.689	3 3/4	1.689	10	2 7/8	15 3/4	16 5/8	4 3/4	225		
	50	215	108	43	95	43	254	73	400	422	120			
5L	2 1/2	10	5	2.300	5 1/8	2.125	14	4	19 5/8	20 1/2	7	348		
	65	250	125	58	130	54	356	100	498	515	178			
6N	3	12	6	2.624	5 1/4	2.624	14	4	19 5/8	20 5/8	7	535		
	80	300	150	67	133	67	356	100	498	524	178			
8R	4	16	8	3.438	6 3/4	3.438	14	4 3/4	22 1/2	25 1/2	7 1/2	958		
	100	400	200	87	170	87	356	120	565	648	191			
2500	2D	1/2	7 5/16	3 21/32	0.599	2 5/32	0.252	6	1 3/4	9	9 1/4	2 7/8	4	
		15	186	93	15	55	6	152	45	229	235	73		
	2D	3/4	7 5/16	3 21/32	0.599	2 5/32	0.434	6	1 3/4	9	9 1/4	2 7/8	12	
		20	186	93	15	55	11	152	45	229	235	73		
	2D	1	7 5/16	3 21/32	0.599	2 5/32	0.599	6	1 3/4	9	9 1/4	2 7/8	23	
		25	186	93	15	55	15	152	45	229	235	73		
	3F	1 1/2	9 1/8	4 9/16	1.100	3	1.100	8	2 1/8	12 7/8	13 5/8	3 1/2	81	
		40	232	116	28	80	28	203	54	327	346	95		
	4H	2	11	5 1/2	1.503	3 3/4	1.503	10	2 7/8	15 3/4	16 3/8	4 3/4	157	
		50	279	140	38	95	38	254	73	400	416	120		
5K	2 1/2	13	6 1/2	2.300	5 1/8	1.771	14	4	19 5/8	20 1/2	7	240		
	65	330	165	58	130	45	356	100	498	521	178			
6M	3	14 1/2	7 1/4	2.300	5 1/8	2.300	14	4	19 5/8	20 1/2	7	405		
	80	365	184	58	130	58	356	100	498	521	178			
8P	4	18	9	3.152	6 1/4	3.152	14	4 3/4	22 1/2	24 1/2	7 1/2	806		
	100	450	229	80	158	80	356	120	565	622	191			

Numbers shown in Black indicate dimensions in inches, weight in pounds. Numbers shown in blue indicate dimensions in mm.

The Conval Story

In 1962, Mr. Chester Siver completed designs for a revolutionary line of high-pressure, forged steel valves. Hamilton Standard (now Hamilton Sunstrand), a division of United Technologies Corporation, was asked to use their then-new Electron Beam Welding technology for joining of parts into valves for subassemblies. Hamilton Standard became intrigued with the valve as an ideal application of the Electron Beam Welding technique, and negotiated a contract for the rights to manufacture and sell the valve. Mr. Siver served as manager of the valve project.



The first CLAMPSEAL® valves were introduced to the market by Hamilton Standard in 1964. However, in the mid-1960's, growing demand for the firm's popular aerospace products forced Hamilton Standard to make the decision to abandon its industrial products projects. The rights to the CLAMPSEAL valve reverted back to Mr. Siver. Since CLAMPSEAL valves were born in Connecticut, Mr. Siver founded "Conval" (short for Connecticut Valve) in 1967. Today, the valves are still manufactured in Connecticut, a state with a longstanding reputation for technological innovation and manufacturing excellence.

Founded in 1967, Conval has grown into a leader in valves for the world's most demanding applications. We have a global team of experts to help to meet your most challenging needs. We invite you to contact us today.

High-pressure, high-temperature ball, bellows, bonnetless, check, gate, globe, throttling, and urea service valves for the world's most demanding applications.



Thank you for your business!
ISO 9001 certified since 1992
PED certified since 2003
Nuclear N-stamp since 2006



Conval^{INC.}

World Headquarters: 96 Phoenix Avenue, Enfield, CT 06082 USA

Phone (860) 749-0761 Fax (860) 763-3557

e-mail: sales@Conval.com www.Conval.com

Conval's policy is one of continuous development and improvement. Every effort is made to produce up-to-date literature but this catalog should not be regarded as an infallible guide to current specifications and does not form part of any contract. Conval reserves the right to make product improvements and changes without prior notice.