



## World Class Clampseal® Strainers

The CLAMPSEAL design is available in a variety of in-line Y-strainer configurations. Supplied as either a simple strainer with blowoff socket connection or strainer with integral blowoff valve, the CLAMPSEAL is easily disassembled for element cleaning or changeout. The CLAMPSEAL offers a versatile, economical alternative for strainer requirements. Blowoff bonnet enables use of any CLAMPSEAL valve as a flush point.

### CLAMPSEAL Strainer

Specifications:

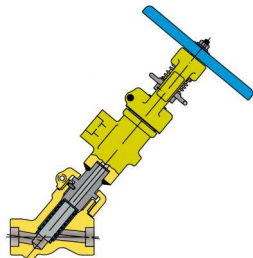
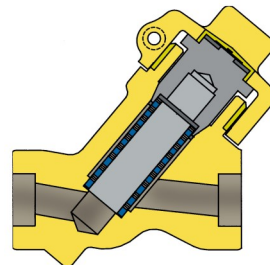
Size: 1/2" - 4"

Class: 600 - 3500

Material: SA 105, SA 182-F22, SA 182-F91, SA 182-F316

Standard strainer element hole sizes: 1/32, 3/64, 1/16, 3/32, 1/8

Options: mesh-lined strainer elements



### CLAMPSEAL Strainer with Blowoff Valve

Specifications:

Size: 1/2" - 4"

Class: 600 - 3500

Material: SA 105, SA 182-F22, SA 182-F91, SA 182-F316

Standard strainer element hole sizes: 1/32, 3/64, 1/16, 3/32, 1/8

Options: mesh-lined strainer elements

### CLAMPSEAL Strainer with Blowoff Fitting

Specifications:

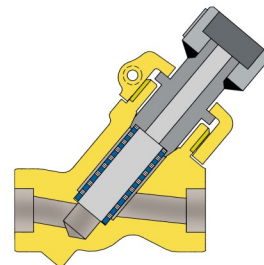
Size: 1/2" - 4"

Class: 600 - 3500

Material: SA 105, SA 182-F22, SA 182-F91, SA 182-F316

Standard strainer element hole sizes: 1/32, 3/64, 1/16, 3/32, 1/8

Options: mesh-lined strainer elements



*Thank you for your interest in doing business with Conval.  
We look forward to being of service.*

World Headquarters: 96 Phoenix Avenue, Enfield, CT 06082 USA  
Phone (860) 749-0761 Fax (860) 763-3557 Email [sales@Conval.com](mailto:sales@Conval.com) Web [www.Conval.com](http://www.Conval.com)